

**THE WARMEST STAY...IN CHILLED OUT  
MANALI  
@  
HIMALYAN MONAL  
BY  
BLUEKO HOTELS LONDON.**



**HIMALYAN MONAL MANALI  
BY BLUEKO HOTELS  
LONDON**

Himalyan Monal Manali

# The Hotel Overview

The Himalyan Monal By Blueko Hotels London is the first and only international branded hotel in Manali.

Our thoughtfully appointed rooms offer super views of the valley, river & snow peaks. Our amenities are ultra- luxurious, including the biggest Restaurant Lounge in Manali. And our hospitality always comes straight from the heart.

International in ethos and carrying the Himalyan Monal By Blueko Hotels London tradition of flawless experiences, here is truly the finest way, to explore the sublime sights, sounds & experiences of Manali, and beyond.

Himalyan Monal By Blueko Hotels London Himalyan Monal, offers spectacular views of the mountain range, as well as view of Beas River. Unbridled luxury, an uninterrupted encounter with nature, along with exceptional hospitality is what the hotel offers. The hotel goes a step further with a fine concoction of deluxe accommodation, recreation and rejuvenation. Himalyan Monal By Blueko Hotels London has been meticulously designed and provides travellers a refuge in its tranquil and serene ambiance.



# MANALI OVERVIEW

The green you find here is not only on the hills  
MY FRIEND!



HIMALYAN MONAL MANALI  
BY BLUEKO HOTELS  
LONDON

Himalyan Monal Manali

# Manali – The Destination

- ❖ A beautiful town located in the Valley in Himachal Pradesh, Manali. The very name Manali evokes visuals of snow-covered mountains, stately deodar tree, apple orchards and tumbling Beas. Manali has a legendary past, it has a history much beyond the Epic Age. It has derived its name from Vaivasvata Manu, the seventh one whose boat landed on this part of the Himalayas after the Deluge. A temple dedicated to the said Manu is situated at Old Manali, two kms from the present Manali town.
- ❖ Surrounded by high peaks in the beautiful green Beas valley, with mountain adventures beckoning from all directions, Manali is a year-round magnet. Backpackers come to hang out in the hippie villages around the main town; adventurers come for trekking, climbing, rafting and skiing; Indian families and honeymooners come for the mountain air and a taste of snow on the 3978m Rohtang La pass. It makes sense to unwind and feed up here for a few days while organising your trip into the mountains.
- ❖ With close proximity to Delhi NCR / Chandigarh / Amritsar and excellent connectivity by air and road, Manali is one of the best holiday destinations, offering a unique culture and amazing scenery all around.



# HOTEL SERVICES & FACILITIES



HIMALYAN MONAL MANALI  
BY BLUEKO HOTELS  
LONDON

Himalyan Monal Manali

# Services & Facilities

What better place than the mountains to embed yourself in moments of utter relaxation and blissful rejuvenation. To experience absolute comfort, guests at the Himalyan Monal By Blueko Hotels London are accorded with a contemporary blend of services and facilities.

- 77 well appointed rooms & suites
- Daily buffet / TDH menu sumptuous breakfast at Café Plus
- Multi-cuisine Restaurant
- Bar (opening soon)
- Gym with Spa & Steam
- Conferencing & Banqueting
- Recreation Zone for Adults & Kids
- Daily Morning Newspaper
- Courtesy Shuttle Service
- Travel Desk
- High Speed Wi-Fi Internet Connectivity
- Lobby Computer
- Currency Exchange
- Doctor on call
- In-house Laundry
- Valet Parking

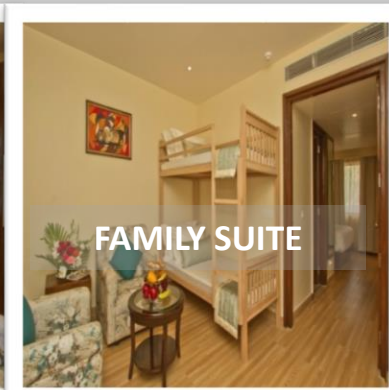
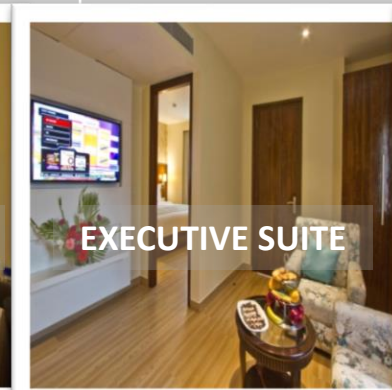
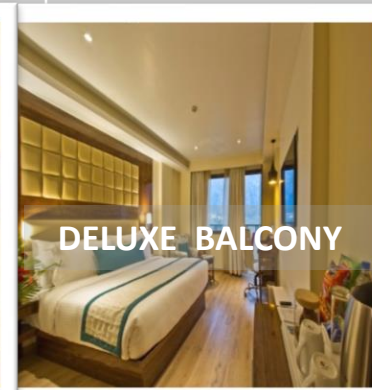
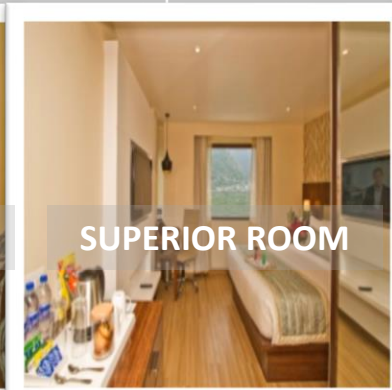


# GUEST ROOMS & SUITES

# Guest Rooms & Suites

A stay that's classic & contemporary at once. Each of our 77 rooms and suites is thoughtfully appointed with a host of ultra-modern conveniences, and provide a personalized, home-away-from-home stay experience in the heart of breath-taking Manali.

#	ROOM TYPE	NUMBERS	SIZE (APPROX.)	VIEW
1	Standard Room	6	250 sq.ft.	Orchard or Terrace View
2	Superior Room	20	290 sq.ft.	Valley & River View
3	Deluxe Room	45	400 sq.ft	Valley & River View + Balcony
4	Executive Suite	2	490 sq.ft	Valley & River View + Balcony
5	Family Suite	4	510 sq.ft	Valley & River View





# Standard Room

## In Room Facilities

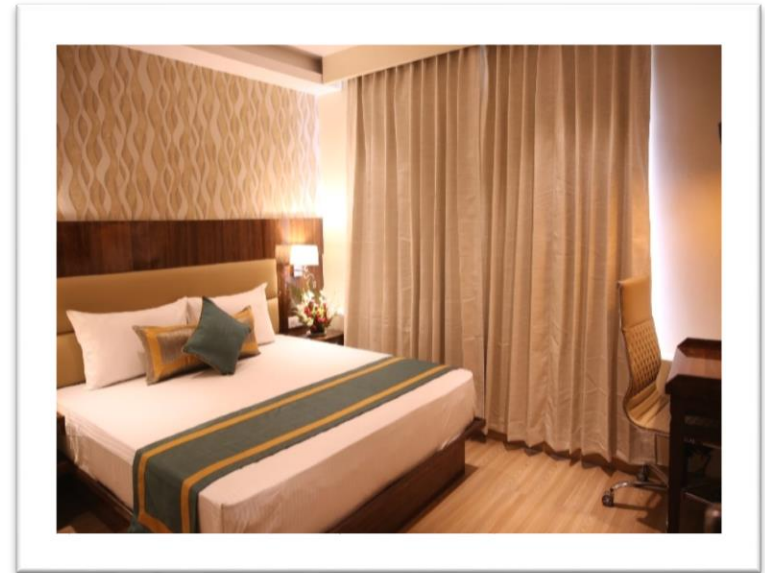
- 250 sqft room
- King or twin bed options
- Wi-Fi internet access
- Welcome drink on arrival (Non Alcoholic)
- 02 bottle of 500 ml packaged drinking water
- In-room tea and coffee Maker
- Well appointed workstation
- 43" LED cable television
- Turndown service on request
- Hair dryer
- Shower cubicle
- Iron & Ironing Board (on request)



# Superior Room

## In-room Facilities

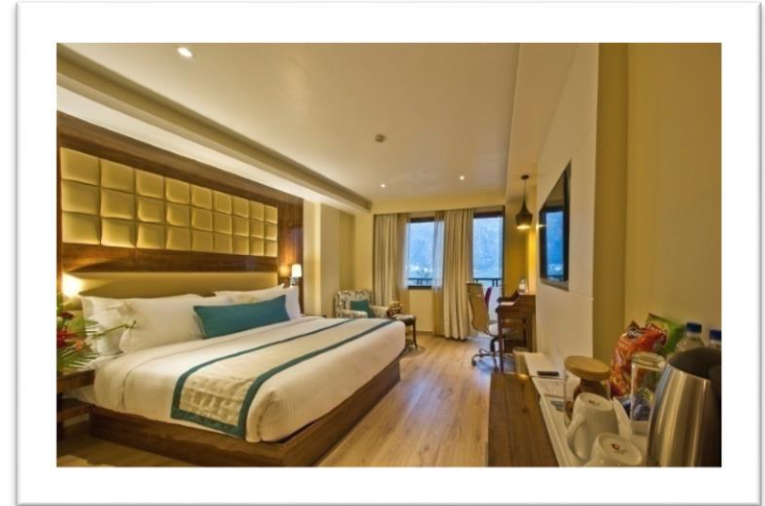
- 300 sqft room
- King or twin bed options
- Wi-Fi internet access
- Welcome drink on arrival (Non Alcoholic)
- 02 bottle of 500 ml packaged drinking water
- In-room tea and coffee Maker
- Well appointed workstation
- 43" LED cable television
- Turndown service on request
- Hair dryer
- Shower cubicle
- Iron & Ironing Board (on request)



# Deluxe Room

## In-room Facilities

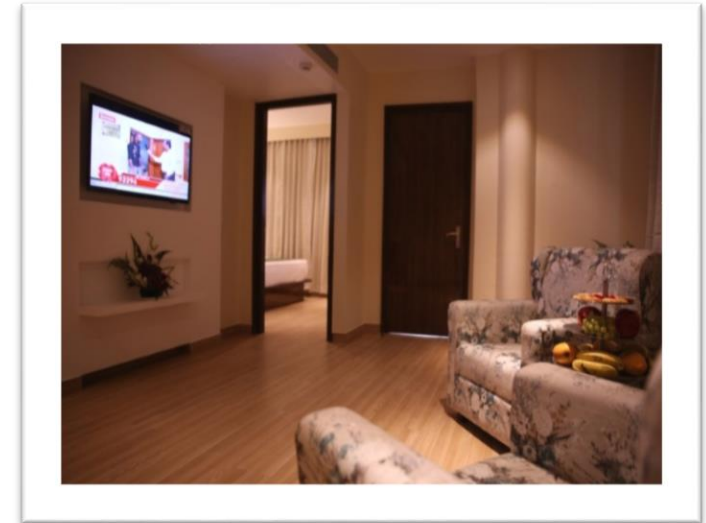
- 400 sqft room
- King or twin bed options
- Wi-Fi internet access
- Welcome drink on arrival (Non Alcoholic)
- 02 bottle of 500 ml packaged drinking water
- In-room tea and coffee Maker
- Well appointed workstation
- 43” LED cable television
- Turndown service on request
- Hair dryer
- Shower cubicle
- Iron & Ironing Board (on request)



# Executive Suite

## In-room Facilities

- 490 sqft room
- King or twin bed options
- Wi-Fi internet access
- Welcome drink on arrival (Non Alcoholic)
- 02 bottle of 500 ml packaged drinking water
- In-room tea and coffee Maker
- Well appointed workstation
- 43” LED cable television
- Turndown service on request
- Hair dryer
- Shower cubicle
- Iron & Ironing Board (on request)



# Family Suite

## In-room Facilities

- 500 sqft room
- King or twin bed options
- Wi-Fi internet access
- Welcome drink on arrival (Non Alcoholic)
- 02 bottle of 500 ml packaged drinking water
- In-room tea and coffee Maker
- Well appointed workstation
- 43" LED cable television
- Turndown service on request
- Hair dryer
- Shower cubicle
- Iron & Ironing Board (on request)





**DINING AND WINING  
@  
CAFÉ PLUS & LOUNGE**

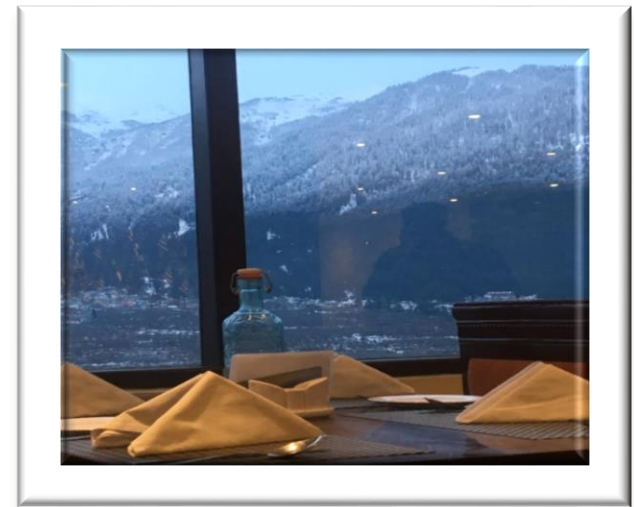


**HIMALYAN MONAL MANALI**  
BY BLUEKO HOTELS  
LONDON

Himalyan Monal Manali

# Café Plus & Lounge

- Café Plus & Lounge, our restaurant cum bar, serves up a luxury dining experience, featuring exquisite international, pan-Indian and local Himachali dishes – all complemented by our legendary service and warm hospitality. Open; 08:00 – 22:30 hours.
- A varied culinary and sumptuous buffet makes this multi-cuisine restaurant an ideal venue for an enjoyable breakfast, a cozy lunch, or a relaxed dinner. You can also choose from our à la carte menu and relish the food of your choice.
- The restaurant located on the lobby level provides some exquisite shots of Manali snow peaks, which makes this venue as the ‘place to eat’.
- Enjoy the gorgeous views of lush valley surrounded by snow – capped hills and have a soothing site of water flowing in the Beas river while having a cup of coffee.





**ANEW SPA + WORKOUT GYM**



**HIMALYAN MONAL MANALI**  
**BY BLUEKO HOTELS**  
**LONDON**

Himalyan Monal Manali



# Anew Spa & Workout Gym

- Signifying rejuvenation of mind, body & soul in Sanskrit, our Anew Spa – featuring expert practitioners and therapists of age-old practices - is a gateway to a universe of sensuous, revitalizing bliss. Transform and heal yourself with comprehensive spa therapies, including our signature spa rituals, select Indian and international massages, express therapies and beauty elixirs.
- Steam - complete your fitness regimen with a deeply satisfying, detox session at our Steam zones. Let the heat and steam melt your cares away as you bounce back, rejuvenated.
- Work Out Gym - our fully equipped multi-gym are the perfect way to flex the muscles, tone-up the body and fire up your fitness levels. Operates 24 hours, however no trainer available.





# EVENTS & MEETING



HIMALYAN MONAL MANALI  
BY BLUEKO HOTELS  
LONDON

Himalyan Monal Manali

# Events & Meetings

- **Royale Room:** Our spacious 3000.sqft holding 350 guests, gorgeously appointed banquet zone on the 6<sup>th</sup> floor coupled with our acclaimed culinary choices and professional service
- **The Terrace:** At Himalyan Monal face picturesque views of the mystic Beas River, serene mountains, lush meadows, dense deodar, pine forests and fruit orchards. A perfect place to have your social events.
- **Regent:** A multipurpose hall with a capacity of 40 guest is an ideal venue for a private party or a small conference. Take advantages or audio-visual equipment and free high speed internet access.

Banquets	Dimension	Area Sq ft.	Theatre	Cluster	U-Shape	Board Room	Ceremony
Royale	52ft X 58ft	3016	300	100	70	50	150
The Terrace	-	1430	-	-	-	-	30
Regent	25ft X 27ft	675	60	40	30	25	50

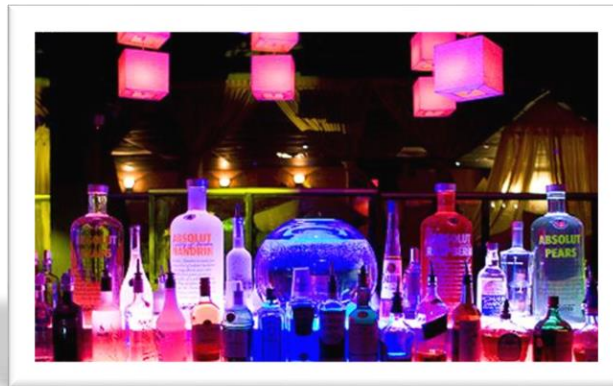
A close-up photograph of a DJ's hand hovering just above a turntable. The turntable is illuminated with a bright red ring of light. The background is dark and filled with colorful bokeh lights in shades of purple, blue, and red, creating a vibrant nightclub atmosphere. The DJ's hand is in sharp focus, with fingers slightly curled as if about to touch the record.

# NIGHTCLUB

Himalyan Monal Manali

# Regent Nightclub

- **Regent Nightclub** : The venue of Regent Nightclub features a high-energy nightclub with mirrored and polished surfaces that makes a good combination with the classic club lightning, and light up the stage and make you dance all night long with all your favourite tunes, with great music, delectable cuisine, an unmatched ambiance, coupled with our irresistible signature cocktails and unique view from the Himalaya!!!



# Distance

## Location

- Around 51 KM from airport at Bhuntar towards Old Manali Road, If you are travelling by road then Bhuntar kullu on National Highway no. 21 which goes to Manali via kullu. The Himalayan Monal located at Parsha, Shaleen Road, Manali Himachal Pardesh.

## Distance

- Mall Road : 05 kms      Nearest Bus Stand : 06 Kms      Hidimba Devi Temple : 07 kms
- Solang Valley: 20 Kms      Rohtang Pass: 52 Kms      Bhuntar (Kullu) Airport : 54 Km
- Manikaran : 80 Kms      Kullu : 45 kms      Dharamshala : 243 Kms
  
- Amritsar Airport : 411 Kms      Chandigarh Airport : 313 Kms
- Delhi Airport : 564 Kms      Nearest Railway Station : Pathankot 316 Kms

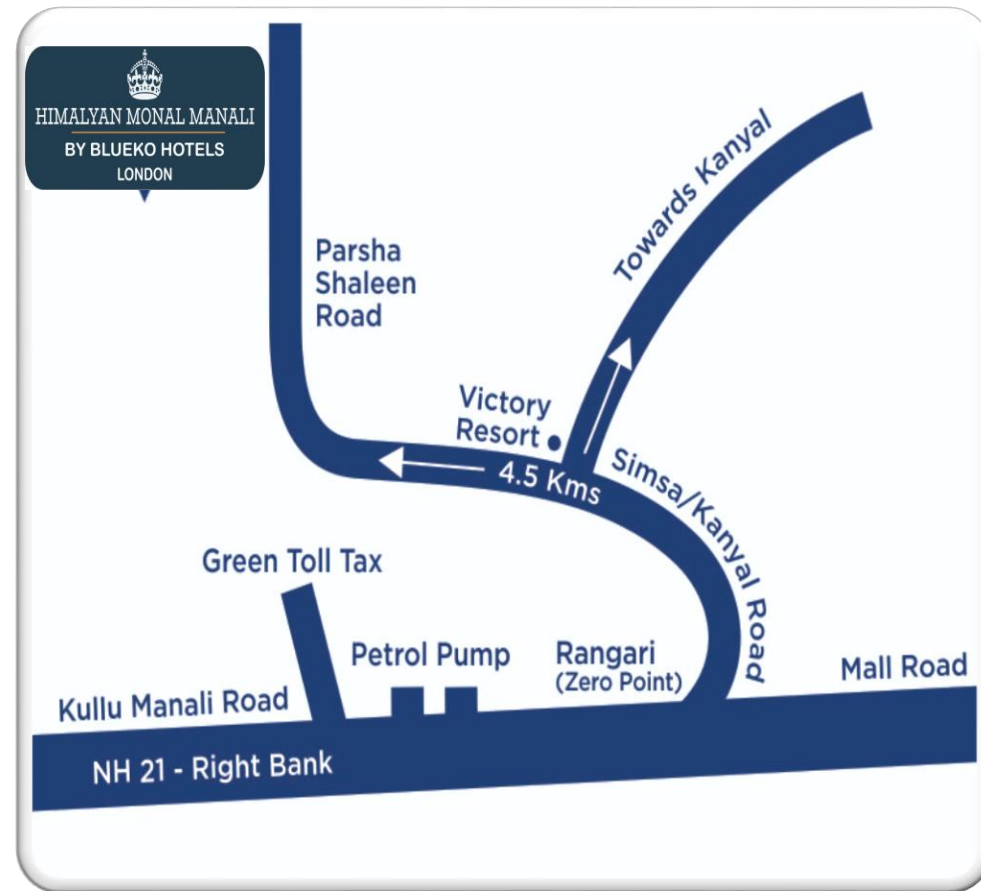
# “Happy to Help You”

Parsha Shaleen Road, Manali  
District Kull 175131,  
Himachal Pradesh  
+91 787 666 4292  
+91 787 666 4290  
+91 931 201 1522  
+91 959 288 4999  
+91 995 399 4466

sales@bluekohotels.com  
b2b@bluekohotels.com

For Query  
b2b@domesticwale.com

Bluekohotels.com



Himalyan Monal Manali